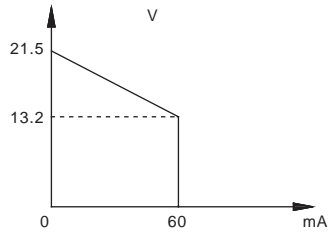
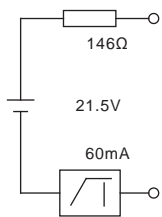


NPEXB-H513L

60mA

20V DC 30V DC
 $\leq 2.2W$

$> 13.2V$ DC
 21.5V DC
 $\leq 60mA$

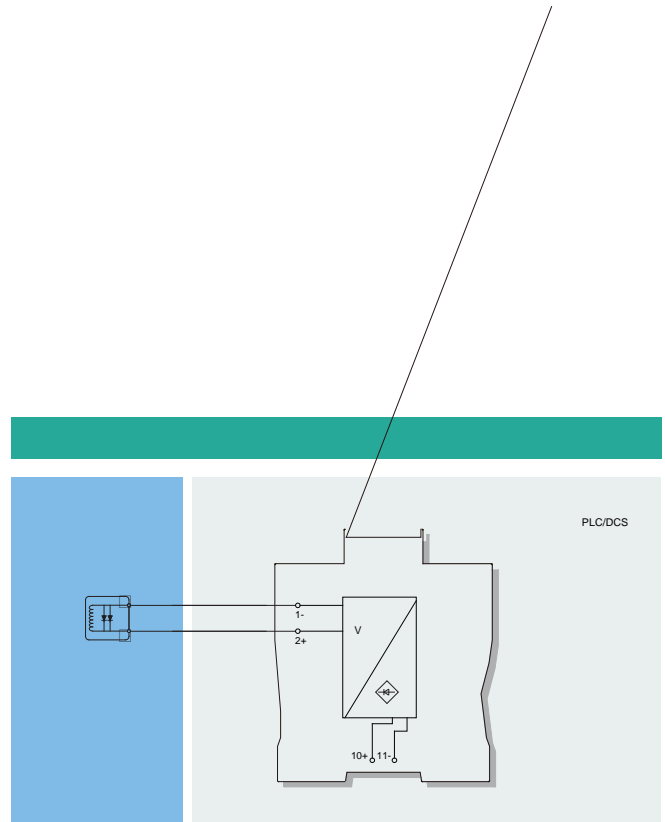


$< 20ms$
 IEC 61326-3-1
 $\geq 2500V$ AC
 $\geq 100M\Omega$ /
 -20 +60
 -40 +80

15.8mmx 121.6mmx 104.8mm

0 1 2 II A II B

T4 T6



(NEPSI)

[Ex ia Ga] II B

(Um) 250V

(1 2)

$U_0=25.2V$, $I_0=190mA$, $P_0=1190mW$

II B $C_0=0.82\mu F$

$L_0=3.9mH$

II A $C_0=2.9\mu F$

$L_0=10.4mH$